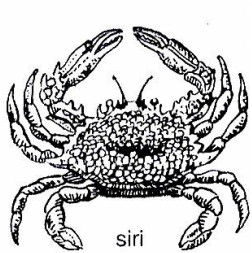


ANIMAIS INVERTEBRADOS

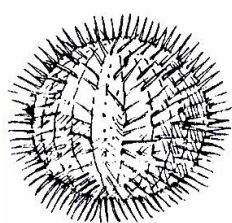
DESENHO DE ANIMAIS INVERTEBRADOS PARA TRABALHOS DE CLASSIFICAÇÃO OU CONFEÇÃO DE PROVAS.



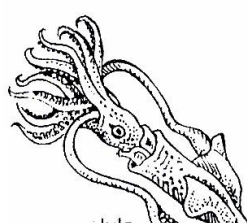
siri



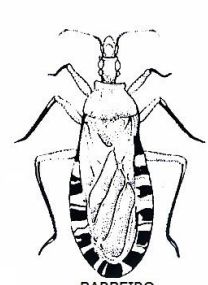
lírio-do-mar



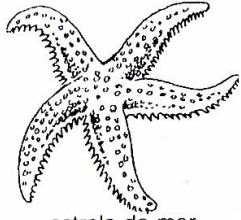
ouriço



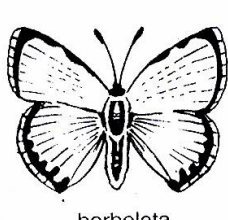
lula



BARBEIRO



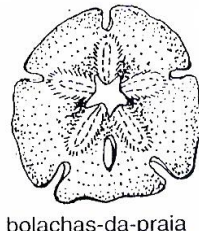
estrela-do-mar



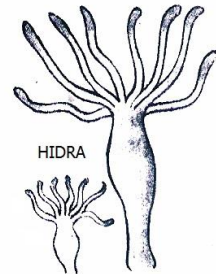
borboleta



lacreia



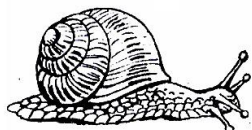
bolachas-da-praia



HIDRA



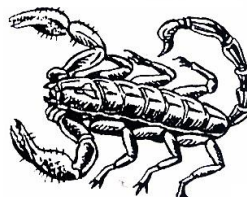
besouro



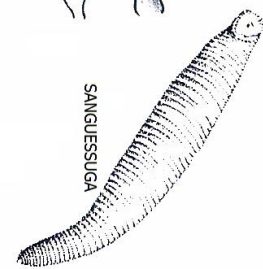
caramujo



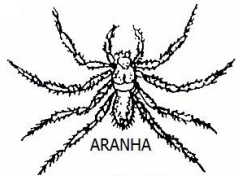
pepino-do-mar



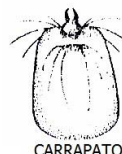
escorpião



SANGUESSUGA



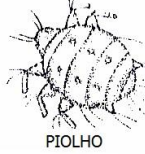
ARANHA



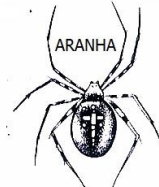
CARRAPATO



BESOURO



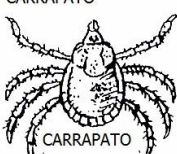
PIOLHO



ARANHA



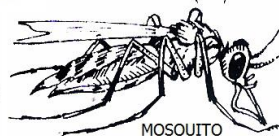
CARANGUEJO



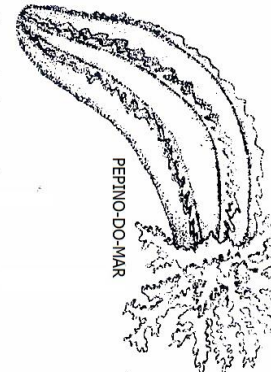
CARRAPATO



GAFANHOTO



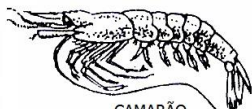
MOSQUITO



PEPINO-DO-MAR



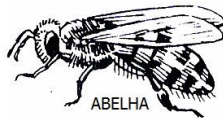
PIOLHO DE COBRA



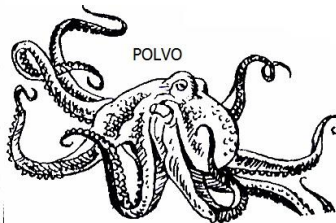
CAMARÃO



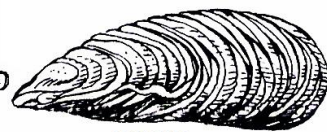
JOANINHA



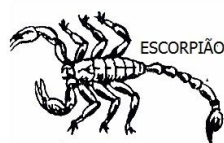
ABELHA



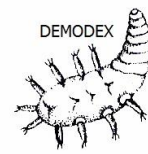
POLVO



MEXILHÃO



ESCORPIÃO

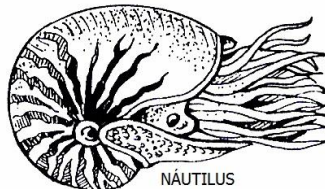


DEMODEX

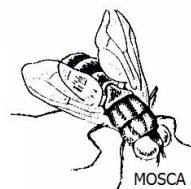


broto

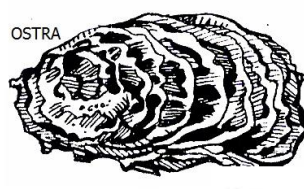
ESPONJA



NÁUTILUS



MOSCA



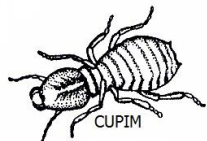
OSTRA



BORBOLETA



LOMBRIGAS



CUPIM



MINHOCA



ÁGUA-VIVA



TÊNIA